



OMEEO REGION NEWS SHEET

SUPPORTED BY



Wednesday 18 September

AN OMEOSHIRE LIONS CLUB PROJECT

20 Cents

SERVING ENSAY, SWIFTS CREEK, OMEEO. BENAMBRA, DINNER PLAIN.

NEWSHEET ENQUIRIES:

Email: newsheet@omeeo.org.au
Phone : 5159 1515 www.omeeo.org.au
Post: P.O. Box 182 Omeo 3898

Medical Services-Omeo Region

For **URGENT** Medical Care call **000**
Omeo Medical Centre
Please Phone: **51 590 140**
To arrange an appointment
Monday to Friday 8.00am—5.00pm
Pathology: Collection Monday to Friday
8.00 am—9.00am
by appointment only

OMEEO COMMUNITY HUB LUCKY NUMBERS

19 Terry Petersen ... 41. Pat McCoy

SNAPDRAGONS JOKE



OMEEO WEATHER



District Diary



Wednesday 18th September

Omeo to Bright Bus..departs Omeo 8.00am return 3.20pm
Lego Club Omeo Library.....3.30pm-4.30pm

Thursday 19th September

Omeo Opportunity Shop Open.....11.00am-3.00pm
Women's Health Night Swifts Creek BNC.....6.00pm

Friday 20th September

Omeo to Bright Bus...departs Omeo 8.00am return3.20pm

Saturday 21st September

AA. meeting 1st Saturday of month, CFA rooms2.00pm
Omeo Opportunity Shop Open.....11.00am-3.00pm

Sunday 22nd September

Anglican ChurchNo Service...
Sunday 22nd Parish Service at Omeo ..10.30am AGM 11.30
Catholic Prayer Meeting Omeo.....9.00am
Winter Golf Comp12.00pm

Monday 23rd September

Omeo to Bright Bus depart....Omeo 8.00am return3.20pm
The High Country Singers Omeo Shire Offices.....2-3.30 pm

Tuesday 24th September

Listen with Lorna live radio O.S.C.A.R. fm ...12.00-2.00pm
East Gippsland Water at the Office 10.00am till 2.30pm

NB. You can lie down for people to walk on you and they will still complain you are not flat enough.

Amicus.



Omeo Medical Centre
Charles Luiz & Howard Goldberg
Please note some days are via telehealth
Phone:5159 0140



Darren Chester
Federal Member for Gippsland



**Shopping
Locally**

Creates Local Jobs
#lovegippsland

1300 131 785

www.darrenchester.com



OMEOPHARMACY
SPEAK TO YOUR LOCAL PHARMACIST

**“SPEAK TO YOUR
LOCAL PHARMACIST”**
186 Day Avenue. Omeo. 3898
PH: 03 51591663 FAX: 03 5159 1686
AFTER HOURS: 0474 017 705

EMAIL: omeopharmacy@gmail.com
DELIVERY AVAILABLE

R.E.C. 17886
 **MITCHELL**
Electrical Services

**INDUSTRIAL — DOMESTIC
ELECTRICAL MOTOR REPAIRS**

CONTACT: TOM MITCHELL
5157 3200 — 0428 573 205
“From The Lakes To The Alps”

Skicom Mt Hotham

CARPET/UPHOLSTERY/MATTRESS CLEANING SERVICE

Scott DeVries
0429 723 274
scottdevries2@icloud.com



STUBBORN DIRT, GRIT, STAINS, PET ODOUR, ALLERGENS... BE GONE!

GARY'S TREE LOPPING

- Tree Lopping
- Stump Grinding
- Hedge Trimming



PH 0427 772 364

garysmaintenance@gmail.com



UNITING CHURCH

AUSTRALIA SWIFTS CREEK

We gather on the **first Sunday of the month**
at 10 am for Worship
and morning tea afterwards.
All are welcome

Activities for the younger ones
Enquiries to Rev Marian Bisset

Ph: 0421 067 212



NOTICE OF AGM

Omeo Golf Club will hold their
AGM earlier than previously.

Wednesday 9th October

Following twilight golf, 7pm.

See you there!

**The Omeo & District Show,
15th, 16th & 17th of November**

2024 Show Schedule is now available,
Find a copy online at www.omeoshow.com.au
Limited printed copies available at local retail stores,
Showday Online is now open to take your entries,
To enter online go to
<https://showday.online/show/omeo>
We thank everyone who sponsors the Show.





**Daily Services between
Melbourne - Bairnsdale - Omeo**
Bairnsdale Depot - Grinters Transport,
 16 Lawless Street, Bairnsdale, 3875

Melbourne Depot - Vic Freight Specialists, 13B,
 13-17 Progress Street, Dandenong, 3175

Omeo Depot – Omeo Welding & Engineering &
 Equipment Hire, 87 Bilton Street, Omeo, 3898
 Phone: (03) 5152 5778 Fax: (03) 5152 3329

Mobile: 0418 516 857 Email:

admin@grinters.com.au

Pallets . Parcels .

- ◆ Livestock . Hay .
- ◆ Machinery . Bulk
- ◆ General . Wool
- ◆ Refrigerated Freight . Farm Equipment

Leaves 9.30am from Bairnsdale to Omeo



Jens and Maureen Hudson

18 Great Alpine Road Lucknow 3875
 Phone : Maureen 0402 001 593
 Jens 0402 006 268

Many fabrics to choose from for all your
 furnishing needs Over thirty years in
 Business and 76 years' experience in the
 industry, between us we can help you.

Including car and motorbike seats

- Car roof linings replaced
- Cushions made to size
- Foam cut to size
- Toyota Land Cruiser seat foams



- | | |
|---------------|---------------|
| ➤ Groceries | ➤ Gas Bottles |
| ➤ Meat | ➤ Bottle Shop |
| ➤ Fruit & Veg | ➤ Post Office |

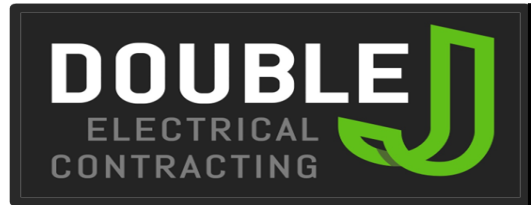
- Fuel ULP & DSL + Winter Mix
- Breakfast & Lunch Daily until 2pm
- Fish & Chips - Friday Nights 4pm-7pm
 - Eat In or Take Away
- Personalised Weekly Orders of Meat, Fruit &
Vegetables

Drop in and meet our awesome team to grab a
 bite to eat or stock up on supplies for your
 adventure around Sunny Benambra

TRADING HOURS

Weekdays 8am - 5:30pm
 Weekends 9am - 5pm
 Public Holidays 9am - 5pm

03 5159 9209



Bore pumps Sales and servicing,
 Mains and solar operated

TV Installation and servicing of both
 Satellite & "Terry"

Generator - Sales/Hire/Installation/

Mains to Generator
 changeover switches and inlets

Electrical Appliance Repairs/Maintenance

Electrical Installations
 Industrial to domestic..

Competitive rates
 and servicing the Omeo region

Contact Jeremiah on 0418 909 978

**Switch all
paper
products in
your life to
100% recycled**



Did You Know?

Toilet paper, printing paper and almost all other paper products are available as recycled options.

For more information contact Council or visit our A – Z - Where to next? on our website.



**EAST GIPPSLAND
SHIRE LIBRARIES**



LEGO Club 2024



Junior LEGO enthusiasts are invited to attend our after- LEGO Club school sessions.

The sessions incorporate freestyle activity and themed construction activities.

Donations Welcome

The library will gladly accept donations of old or new LEGO brand pieces for our LEGO Club collection.

For more information, phone **51524225** or ask in person at the library about these **FREE** sessions.

Omeo Service Centre

3.30pm-4.30pm

Every Wednesday

Except School Holidays



All Children must be accompanied by an adult

ALL SCREENS GIPPSLAND
SALES - SERVICE - REPAIRS

**GLASS & GLAZING –
WINDOW REPLACEMENTS**

– SHOWER SCREENS – ROBE DOORS –
SECURITY DOORS – FLY SCREENS &
MORE

Servicing - Ensay, Swift Creek, Omeo,
Benambra & Dinner Plain

OFFICE: 51526791

JUSTIN: 0457775168

emailsales@allscreensgippsland.com.au

www.allscreensgippsland.com.au



Specialising in the following services

Potable Water Cartage

Transport of general freight, Agricultural goods,
Motorbikes, Quad bikes, Mowers
Small tractors, SXS's, Machinery parts,
Bagged grain and much more.

Reasonable rates

Truck equipped with 1,000 KG. tailgate loader
Full tarpaulin if required,
ability to load and unload goods
with 1.6 tonne all terrain pallet jack.
Truck capabilities: 6.tonne, 4x4
Tray size: 5.5 mtrs x 2.4 mtrs.
Flat top trailer 6.3 mtr x 2.5 mtr

Transporting weekly to Omeo and district
from Albury/Wodonga Corryong
Orders phoned or emailed by Tuesday
11 am For delivery on Wednesdays

Contact Mark for delivery charges on
0428 264 480

Mark @tectronix.com.au



SWIFTS CREEK BUSH NURSING CENTRE INC.

ABN: 78 513 040 891 INCORPORATION No A0011271F

ANNUAL GENERAL MEETING

When: Wednesday 9th October 2024 @ 5.30pm

Where: Interested parties may participate in the AGM in person at the Swifts Creek Bush Nurse Centre or Via video conference on Zoom. If you require the Zoom link please contact the centre.

Committee members for renomination

Pauline Canfield -renominating

Michael Cawley -renominating

Committee member vacancies:

No vacancies at this time

RSVP please Contact: Bush Nursing Centre: 03 5159 4210 or the
SCBNC email: Secretary.scbnc@gmail.com for access to the Zoom link.



A new regional body for communities of the Omeo Region

Anglers Rest, Benambra, Bindi, Bingo Munjje, Brookville, Bundara, Cassilis, Cobungra, Doctors Flat, Ensay, Ensay North, Glen Valley, Hinnomunjje, Omeo, Omeo Valley, Reedy Flat, Shannonvale, Swifts Creek, Tambo Crossing, Tongio and Uplands

All welcome

Drop In Session | Thurs 3 Oct 4.30-5.30pm

Swifts Creek Hall - new extension

or

Drop In Session | Fri 4 Oct 2.30-3.30pm

Omeo Community Hub, 179 Day Av

We want your feedback on:

- **Options** for a regional model
- **Priorities** a regional group will address

To register or for further information:
Email Helena at admin@orcra.org.au

NEW RUSH BREWHOUSE

Opening Hours

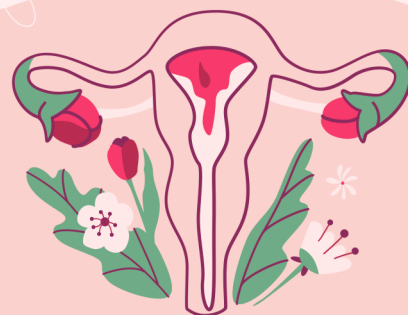
Friday from 5pm
Sunday Breakfast 8am 12pm
Sunday Lunch 12- 2pm



WOMEN'S HEALTH NIGHT

"SCREENING DOWN UNDER"

19th September @ 6pm



Let's talk about Cervical Screening,
Breast Screening & Bowel Screening

@ Swifts Creek Bush Nursing Centre
RSVP please call 5150 2430
Childcare, Food & Beverages provided

SUBSCRIBERS PLEASE NOTE

www.omeo.org.au/newsheet

Phone : 5159 1515

**All articles for the newsheet to be in
by 12.00 noon on the
Monday before publication.
(Wednesday)**

Prices for Newsheet Ads are as follows

Full Page A4 \$40

1/2 Page.\$20.00

1/4 Page.\$10.00

1/8 Page.\$ 5.00

Please state what size you require &
**How Long /Dates you would like it
advertised for.**

Thank You

PH : 5159 1515



School for Student Leadership

The Alpine School Dinner Plain Campus Catering Assistant

Ongoing Position

Start date 7/10/2024

Reference No. 1434418

Please apply through

DET

Recruitment Online website

www.education.vic.gov.au/schooljobs

or phone

03 5150 8100

Applications close

19/09/2024



East Gippsland Water is providing
more face-to-face opportunities
for our customers to connect
with us as part of our
Customer Connect program.

Where: Omeo Office, 179 Day Street, Omeo

When: Tuesday, 24 September 2024

Time: 10am to 2.30pm

- ◆ **Billing support**
- ◆ **Financial assistance**
- ◆ **Water efficiency savings and advice**
- ◆ **Concessions**
- ◆ **Rebate schemes**
- ◆ **And much more!**

We hope to see you there!

Alternatively, you can
contact us
on **1800 671 841**



Benambra CWA Presents



SPRING FAIR

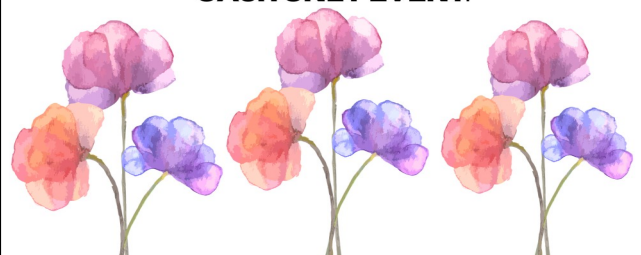
Date: 6th October Time: 11am till 2pm

Come to 'Dejalis' Benambra park for a Spring Fair with games,
Apple bobbing, Donuts on a string, face painting and more.

All activities covered with a Gold coin donation.

CWA providing BBQ lunch, Cake Stall, Fairy Floss and Popcorn at
a small cost.

CASH ONLY EVENT.





PHYSIOTHERAPIST

Robert Hughes is a qualified and extremely experienced Physiotherapist from McMillan Chiropractic

Robert will be available at Swifts Creek Bush Nursing Centre Wednesday, 18th September, 16th October, 13th November 2024

FOR APPOINTMENTS Please phone 5150 2430 NO GP Referral required.



SWIFTS CREEK BUSH NURSING CENTRE

T. 03 5150 2430 F. 03 5150 2439
Email. susan.carroll@gha.net.au

17 McMillan Street, Swifts Creek 3896
Open 9am until 5pm Monday to Friday
9am until 11am Weekends

Emergency on-call available after hours
Nursing services: No appointment required.

You are required to pay an annual membership fee or otherwise a non-member fee.

A Rural and Isolated Practice Nurse is available for wound infections.

Assistance with Virtual Emergency consults.

Pathology: Every Weekday, 9am until 9.45am

Women's Health

Ante/Postnatal Care

Suturing

Memberships

Family \$140, Single \$70 due 31st July each year

Hire of Equipment

Home visits if required.

24hr Bp monitor

Immunisations

Webpage – [https://](https://www.swiftscreekbushnursingcentre.com.au)

www.swiftscreekbushnursingcentre.com.au



Ensay Bush Nursing Centre

T. 03 51502416 F. 03 51502419 email: ensaybnc@gha.net.au

Open 9am until 3pm Monday to Friday

or 8.30am-9am and 3-3.30pm emergencies only

Nursing services: No cost No appointment required.

Pathology Monday to Friday 9 am until 10.30 am- No cost. No appointment required

Footcare: Approximately 6 weekly, \$15.00 cost ring for an appointment

Walk and morning tea: 1st Friday of each month may include some craft activities, no cost only delicious homemade cakes etc.

RFDS mental wellbeing: Fortnightly face to face and telehealth model.

Memberships: \$50.00 family and \$25.00 single due 31st of July each year, pro-rata payments accepted for new members.

AGM: Occurs on the second Monday of October all welcome, new members to the COM welcome.

Follow us on facebook and our webpage for events and employment opportunities.

WEBPAGE

<https://www.ensaybushnursing.com.au>



**5 Great Alpine Road
Ensay, VIC. 3895**



The Omeo & District Agricultural & Pastoral Society Inc. invites you to attend

Floral Art & Cookery Workshops

All welcome to this fun and free event

Find out what the Show judges are looking for! Learn and share some tips and tricks on how to present the best bunch! Be Show-ready to make your exhibits looking the best they can.

Learn from respected Show Judges and Show enthusiasts, Judi Sykes, Anne-Marie Primmer and Maree Campbell. Bring some foliage (on Wednesday) or a jam & cookery item (on Saturday) for discussion, feedback and fun. All other equipment supplied.



Floral Art Workshop

Wednesday 23rd October 12:00pm – 4:30pm

To be held at the Omeo Recreation Reserve Pavilion

&

Cookery, Preserves & Jams Workshop

Saturday 26th October 12:00pm – 4:30pm

To be held at the Omeo Recreation Reserve Pavilion



Lunch Included. Register now. Registrations close 21 October.



Registration & information: Lisa Lee, ODAPS Secretary E: omeoshowsec@gmail.com P: 0499 192 722
www.omeoshow.com.au Facebook: Omeo Show 2024. Hosted by the Omeo & District Agricultural & Pastoral Society and supported by the Foundation for Rural & Regional Renewal/FRRR & the Omeo Garden Club.



Golf Club Results Sunday 15/9/2024

18-hole stableford

Open to all members & casuals

12.30pm for 1pm hit off.....*same next week 22/9/2024*

<u>Place</u>	<u>Points</u>	<u>Player Name</u>
Winner	32	Steve Thomas
2 nd	31	Christine Faithfull
3 rd	29	Dean Jobling
NAAGA	19	Walter Bower



Nearest to Pin 7th

Steve Thomas

Nearest to Pin 16th

Walter Bower

Nearest to Pin 2nd shot 6th

Steve Thomas

AGM 9th October 7pm after Twilight Golf



TINY TOWN APPLICATION

Omeo community groups

For interested Omeo community groups looking towards a Tiny Town grant application in this coming round, you are invited to attend a meeting at the Omeo Community Hub on

September 19th at 6pm to discuss a town submission. As you will be aware the process for this round has changed from that of the previous round.

Come along with your ideas. A second meeting for the development of a town agreed application will be held on **September 26th**. Representation of your committee is required to be a part of the application. A co-contribution is also required – refer to the Tiny Towns guidelines. Applicants other than local government and Alpine Resorts - 20% of the total proposed project budget must be co-contributions (can include 50% in-kind). If the decision comes to a vote then there will be one vote per community group represented at the second meeting.

You are not obligated to be a part of this process and apply as a stand alone but the information provided by RDV is that collaborative applications will be deemed more favourably.

Applicants may apply for a minimum grant of \$5,000 and a maximum grant of \$50,000 (not including GST). Every project requires its own application. A maximum amount of \$50,000 per town will be applied for Round 2 to enable an equitable and broad geographic spread of funding.

Where there are multiple applicants with projects from the same town, these applicants are encouraged to work together, including with local government, to put forward high-quality applications for agreed projects that strongly align with the program guidelines.

This could be one agreed project or multiple projects that combined do not exceed \$50,000



TRIVIA & PIZZA NIGHT
SATURDAY OCT 5



TAMBO VALLEY GOLF CLUB
proudly supporting the **Swifts Creek Bush Nursing Centre**

Invites you to join them for a
Not so serious – But Serious Enough!
TRIVIA & PIZZA NIGHT
JUNCTION HOTEL, SWIFTS CREEK
Saturday 05 October, commencing 7.00p.m.
\$25.00 per head

Light Meal: Pizza and Shared platter included.
Teams of 6 – or join a team on the night.

Major Raffle: 2 Nights Accommodation Lakes Entrance

Get ready for a night of laughter, prizes and fun. A great night for a great cause.

Bookings Essential please contact Bill or Lynne Cooper
Email: secretary@tambovalleygc.com or Phone 0409 994 311 or 0458 994 311



Funds have been made available by East Gippsland Shire Council and Gippsland Community Foundation with funds from the Victorian Government through Emergency Recovery Victoria and Commonwealth Government under the Commonwealth 2020-2024 Category C Disaster Recovery Funding Arrangements in response to the 2020-2021 Eastern Victorian Bushfires.



WINE TASTING

Fresh air Cafe
hosting a wine tasting night

Friday 27th of September 2024 6pm.

Cheese plater for two with
sparkling red taster on arrival.

Tasting starts at 6:30 pm featuring
Michellini + Gapsted wines from the
Buckland Valley just over the hill.

All wines will be pared with finger
foods to enhance your tasting
experience.

\$65 per head
limited seating, so get in early to
avoid disappointment
call 51591683



Country Women's Association of Victoria Inc.
High Country Branch

2025 Scholarship

**The branch is proud to announce the
High Country Branch \$3000 Scholarship
to assist with ongoing education.**


Eligible applicants will be year 10 and above
school leavers from the local community.

You can request further information and an application
form by contacting:

Rev. Marian Bisset
0421 067 212

or by contacting the branch through social media.

Applications due: 21st October, 2024

 [cwahighcountry](#)



Interested in learning to play *golf*?

All welcome to join in the fun of learning the basics of this great game at the

TAMBO VALLEY GOLF CLUB,
203 Nunning Road, Tongio
SUNDAY, 06 OCTOBER 2024.



Matt will provide two great clinics, together with the opportunity to enjoy a private golf lesson by appointment should you choose.

JUNIOR COACHING CLINIC - COMMENCES 9.00A.M.

This Session is designed for children between the age of 7 and 18 years

- \$5.00 per person participation fee for insurance purposes applies *payable on the day
- All children will receive free junior membership to the Club (no green fees apply)
- All equipment provided on the day, children with their own clubs may bring them.

ADULT COACHING CLINIC - COMMENCES 10.30A.M.

- \$5.00 per person participation fee for insurance purposes *payable on the day
- All equipment provided on the day, participants with their own clubs may bring them.

FREE FUN 9 HOLE round of golf following the clinics!

The NEXT CLINIC will be held on Sunday, 24 November, 2024 – Further Details to follow.

Bookings Essential. Please register your interest via email or phone the Club Secretary, Bill Cooper.
Email: secretary@tambovalleygc.com
or Phone 0409 994 311 or 0458 994 311



Funds have been made available by **East Gippsland Shire Council** and **Gippsland Community Foundation** with funds from the Victorian Government through **Emergency Recovery Victoria** and **Commonwealth Government**, under the Commonwealth-State Category C Disaster Recovery Funding Arrangements, in response to the 2019-20 Eastern Victorian Bushfires.





LET'S CELEBRATE!!!

SWIFTS CREEK HALL

UPGRADE

SATURDAY
21ST
SEPTEMBER
2024

- ✓ 5.00pm – 6.30pm
Free BBQ with the Swifts Creek Football Netball Club
- ✓ 7.00pm – til late
Free concert with **MOLLIMOR**, Celtic music band
- ✓ BYO
- ✓ No bookings required
- ✓ Next Project a new roof !! Donations warmly received.

This project is jointly funded by the Victorian Government and Commonwealth Government under the Commonwealth-State Disaster Recovery Funding Arrangements



Omeo & District Show 16th November 2024

LOTS OF DOG EVENTS

- **Photography: Working Dog/s In Action**

big prizes this year enter on-line www.omeoshow.com.au

- **Yard Dog Trials:**

the best live action enter www.vyufda.com.au prizes & trophies



- **Dog High Jump:**

Start training! Enter on the day at the Show prizes & treats

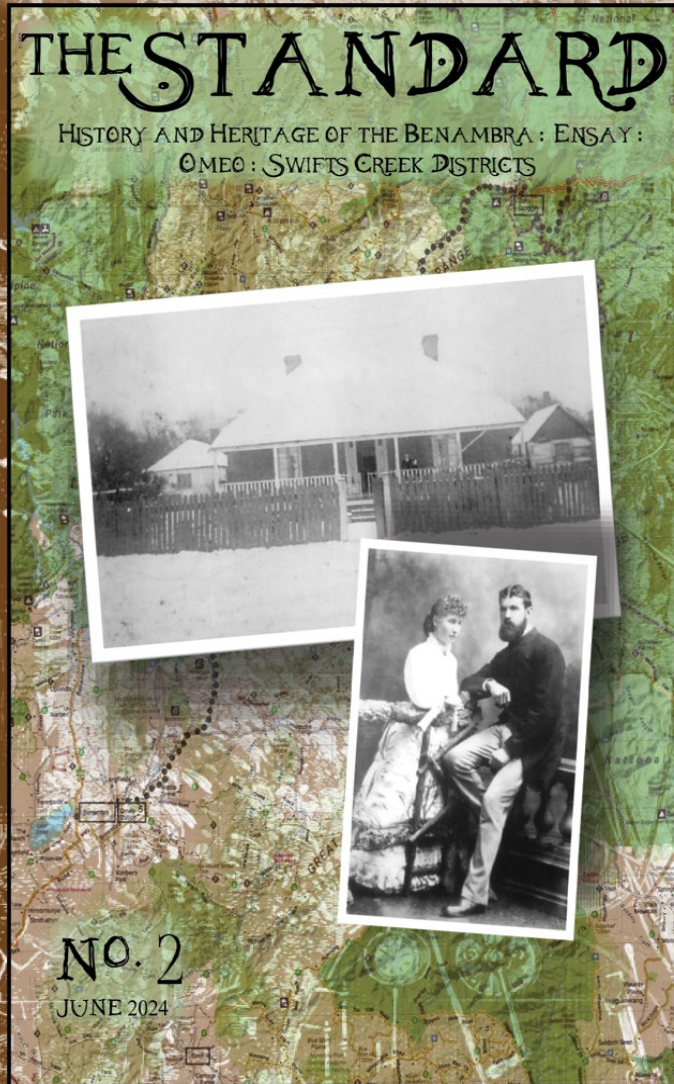


www.omeoshow.com.au

**Showdayonline
Schedule & entries now open**

THE STANDARD

HISTORY AND HERITAGE OF THE BENAMBRA : ENSAY :
OMEIO : SWIFTS CREEK DISTRICTS



OMEIO HISTORICAL SOCIETY
Our quarterly magazine is
available in printed form at:

*Swifts Creek Bakery

*Fresh Air Cafe, Omeo

*Benambra General Store

\$8 per copy. Issue 3 out soon.

For an electronic copy,
contact omeohs@gmail.com
and take a subscription.
\$20 for the year (4 copies)

